

# ASCE

American Society  
of Civil Engineers



# News

ASCE Illinois Section

Vol. 52, No. 1  
January 2011

## INSIDE:

President's  
Notes

2

Meet Your Local  
Sustainability  
Committee

5

News &  
Secretary  
Report

8

Section  
Activities

9

## Cost-Effective Earth Retention System for Prairie State Gas and Coal-Limestone Unloading Structure

Construction of the largest coal-fired power plant in the United States is well underway near Marissa, Illinois. Once completed, the power plant will have the capability produce 1,600 megawatts of power, enough to serve 2.5 million families. A 700-foot tall concrete stack, approximately 70 feet taller than the St. Louis Arch, had been erected during early phases of the construction schedule. Near the base of the stack and multiple proposed steel structures, a limestone unloading structure consisting of a rotary railcar dump and conveyor was planned for construction. The remote location of the new power plant will consume up to 700 acres of property upon completion, most of which comprised of cleared farm ground.

The excavation for the unloading structure required earth retention. The proposed unloading structure foundation was planned to be up to 60-ft below grade. The soil profile consisted of 45-feet of relatively stiff silty clays overlying layers of shale and sandstone. With the close proximity of the existing stack and the ongoing construction of the surrounding steel structures, the available open real estate for crane access and material lay-down was a necessary commodity. These conditions eliminated the option of laying back the excavation at a reasonable slope and therefore required earth retention near the structure's footprint.

Construction of the largest  
coal-fired power plant in the  
United States is well underway  
near Marissa, Illinois.

The originally specified earth retention system for the proposed structure consisted of approximately 510 linear wall feet of braced, hot-rolled sheet piling to be designed by the geotechnical contractor. The sheet piles were specified to extend from grade (Elevation 454) down to the top of rock (Elevation 410). The excavation below the top of rock was assumed to stand freely without subsiding. Because the piles were specified to sit directly on top of the shale bedrock, developing passive resistance from the sheet pile "toe" was not possible. Instead, an additional bracing level would be required near the sheet pile base.

Because of the high cost associated with the specified retention system, an alternative solution was proposed by Hayward Baker which consisted of designing, furnishing, and installation of 530 lineal wall feet of a soil nail and shotcrete earth retention system for the proposed limestone unloading structure and conveyor, saving half the cost of the specified system. The alternative system was designed for a top of rock elevation of 410 feet with a

(continued on page 6)

Advertise in the  
Illinois Section  
Newsletter  
and reach  
Civil Engineers in  
the Chicago Area.

For details email  
Brian Pawula,  
Director of  
Advertising, at

[brianp@thomas-engineering.com](mailto:brianp@thomas-engineering.com)

# President's Notes

Darren T. Olson, P.E., CFM, D.WRE



## Make an Infrastructure Resolution

I'm writing this article as I'm sitting on an airplane parked on a runway in Indianapolis. We have a "weather" delay and won't be taking off for O'Hare until the weather clears in Chicago and they can process the backlog of flights. Most other people on the plane are cursing the airline (don't get me started on "weather"

It has been an amazing and sustainable transformation at the airport, and the 6 future parallel runways will make taking off and landing in poor weather conditions safer and more efficient.

December "Critical Infrastructure Protection Month"—to call attention to an all too often "out of sight, out of mind" issue that has a real and direct impact on the lives of each and every one of us. As we begin the new month of January, let's strive to keep the focus on our nation's infrastructure all year long. The Illinois Section will be heading down to Springfield this Spring to talk infrastructure funding; I hope you will consider joining us. Keep an eye on your email and newsletter for announcements on our trip.

## ASCE Illinois Section News

**ILLINOIS SECTION NEWSLETTER**  
Mailed to all ASCE-IS dues-paying members  
American Society of Civil Engineers  
Illinois Section – Region 3

**Communications Chair/  
Newsletter Editor –  
Bryan Luke**

Christopher B. Burke Engineering, Ltd.  
9575 W. Higgins Road, Suite 600  
Rosemont, IL 60018  
847-823-0500  
[bryanluke@cbbel.com](mailto:bryanluke@cbbel.com)

**Director of Advertising –  
Brian Pawula**

847-922-6125  
[brianp@thomas-engineering.com](mailto:brianp@thomas-engineering.com)

Pres. Darren Olson . . . . . (847) 823-0500  
Pres.-Elect William Cussen . . . (847) 394-6600  
Sec. Lou Arrigoni . . . . . (312) 345-8681  
Treas. Emilie Becq-Giraudon . (312) 742-0326

Please update your information at  
[www.asce.org/myprofile](http://www.asce.org/myprofile) or  
call 1-800-548-2723

Web Site: <http://www.isasce.org>

**ASCE National Information**

Phone: 1-800-548-ASCE  
Web Site: [www.asce.org](http://www.asce.org)

delays, I could rant for hours) but instead I use it as a chance to talk to the person in the seat next to me about the ongoing infrastructure improvements at O'Hare airport. It has been an amazing and sustainable transformation at the airport, and the 6 future parallel runways will make taking off and landing in poor weather conditions safer and more efficient. Couldn't come soon enough as far as I'm concerned right now!

Despite my traveling difficulties, I am having a great holiday season. I hope that everyone had a wonderful and safe New Year. With the holiday season now coming to an end, it is time to make good on our New Year's resolution to keep the deteriorating condition of our nation's roads, water systems and levees—and its impact on our safety and economy—on our elected officials "to do" lists. President Obama declared

As we begin the new month of January, let's strive to keep the focus on our nation's infrastructure all year long.

I'm very proud to announce that the Illinois Section has been awarded the 2010 Outstanding Newsletter Award for very large Sections and Branches.

I'm very proud to announce that the Illinois Section has been awarded the 2010 Outstanding Newsletter Award for very large Sections and Branches. This award will be presented at the Regions 3, 6 and 7 Multi-Region Leadership Conference on Friday, January 28. This award recognizes the outstanding content and distribution of our newsletter, but as an avid reader-you already knew that! Congratulations to our Communications Committee, especially Bryan Luke who has put a tremendous amount of effort as Chair of that Committee—even as his wife is expecting twins within the next few weeks!

We also learned this past month that the Illinois Section was the recipient of an honorable mention for the 2010 ASCE Diversity Award! The Illinois Section has

received this honorable mention because of our noteworthy efforts in demonstrating support of equitable opportunity for participation of people within the civil engineering profession without regard to race, ethnicity, religion, age, gender, sexual orientation, nationality, or physical challenges. Per my discussions with the awards committee, what stood out to them was that the Section is making significant contributions to the enhancement and awareness of the profession through the Minority Affairs Committee (MAC). Through our support of the IEP Notre Dame Scholarship Program and the PreTRANS program at IIT, the Illinois Section has made noteworthy strides in ensuring

Per my discussions with the awards committee, what stood out to them was that the Section is making significant contributions to the enhancement and awareness of the profession through the Minority Affairs Committee

that the profession is a diverse and inclusive one. Congratulations to our

Minority Affairs Committee (MAC) for this national recognition.

As I close the notes for this month, I'd like to remind our members that we are beginning to kick off activities for National Engineer's Week starting in the month of January. Specifically, the Future Cities Competition will take place on January 29, 2011 at the University of Illinois-Chicago. I strongly encourage all of our members to participate by being a judge; it is as rewarding for you as it is for the students. If you have questions, please contact **Mathew Miller** at [mamiller@hntb.com](mailto:mamiller@hntb.com). If my flight ever makes it into O'Hare, I'll see you there. **ASCE**

# ADVANCE YOUR ENGINEERING CAREER

University of Wisconsin-Platteville Online  
**Master of Science in Engineering**

Learn how to complete your projects on time, within budget, and in compliance. Gain communication, project management, and technical skills.



## Contact Us Today!

[goUWP.com/ISACE1](http://goUWP.com/ISACE1)  
[DistanceEd@uwplatt.edu](mailto:DistanceEd@uwplatt.edu)  
800.342.5460 or 608.342.1468



UNIVERSITY OF WISCONSIN  
**PLATTEVILLE**  
ONLINE

MARK YOUR CALENDAR

## THE SEI ILLINOIS SECTION

19<sup>TH</sup> BIENNIAL LECTURE SERIES AT THE HAROLD WASHINGTON LIBRARY

# SUSTAINABLE STRUCTURES

**Session 1** – Wednesday, March 2, 2011

### SUSTAINABILITY PRACTICES

Emily Lorenz – CTLGroup  
Ken Maschke & Rachel Michelin – Thornton Tomasetti

**Session 2** – Wednesday, March 16, 2011

### LOCAL STRUCTURES

Charlene Walsh – Chicago Dept. of Transportation  
Steven Olson – Solomon Cordwell Buenz

**Session 3** – Wednesday, March 30, 2011

### INTERNATIONAL STRUCTURES

Robert Sinn – Thornton Tomasetti  
Bruce Kuwabara – KPMB Architects

**Session 4** – Wednesday, April 13, 2011

### SPECIALTY STRUCTURES

Siamak Daneshvaran – Aon Benfield  
Jim Schroder – Schroder and Associates

The lecture series will be presented in four evening sessions, each featuring two lectures consisting of nationally recognized speakers and a panel of local professionals practicing in the subject specialty. Additionally, each session will yield 2.5 PDHs for a total of 10 PDHs. Register online at [www.123signup.com/register?id=vztr](http://www.123signup.com/register?id=vztr). Additional information, registration forms, and sponsorship opportunities will be provided in upcoming newsletters, emails and online. For more information, email [asce.il.struct@gmail.com](mailto:asce.il.struct@gmail.com).



**ENGINEERS  
WEEK® 2011**  
FEBRUARY 20-26

[www.futurecitychicago.org](http://www.futurecitychicago.org)  
[www.dupageeweek.iit.edu](http://www.dupageeweek.iit.edu)

**Interested in  
volunteering to help  
your profession?  
This is your chance...**

The section is seeking  
nominations from its members  
for those interested in serving on  
the IL Section ASCE Board

If interested, drop a quick email  
to Chris King at [cking@reltd.com](mailto:cking@reltd.com)  
Please use "ASCE Board Nomination"  
in the subject line.

# Meet your Local Sustainability Committee

By ASCE Illinois Section Education/Outreach Committee

The Illinois Section Sustainability Committee was established in the Spring of 2010 to promote ASCE National's Sustainability Program to the local membership and other key regional stake-holders. The Committee is comprised of 15 section members who are professionals that hail from the various civil engineering fields, including academia. The kick-off meeting was held on April 22, 2010 with then President-Elect **Kathy Caldwell** in attendance. Her valuable insight on National's Program was not only beneficial but also provided a great start to this committee!

The Committee is currently chaired by **Thera Baldauf** and is comprised of four subcommittees, the Collaboration Subcommittee, chaired by **Gary Paradoski**, Awards Subcommittee, chaired by **Darren Olson**, Education/Outreach Subcommittee, chaired by **Maureen Egan**, and the Programs Subcommittee, chaired by **John Lazzara**. Other members include **Matt Bardol**, **Joanna Colletti**, **Rob Covey**, **Bill Cussen**, **Charles Frangos**, **Tatiana Hernandez Papakos**, **Chris King**, **Katie Owens**, **Kirshna Reddy**, and **David Sickler**.

Since April, each subcommittee has been very busy planning and making preparations for the launch of National's project rating program in 2011. The rating program is a web-based rating system with the main goal to enhance sustainability in civil infrastructure by means of fostering sustainability's triple bottom line – meeting economic, social, and environmental needs. The rating system was developed jointly by ASCE, the American Public Works Association (APWA), and the American Council of Engineering Companies (ACEC) to assist designers

The Committee is comprised of 15 section members who are professionals that hail from the various civil engineering fields, including academia.

and constructors in making sound decisions in resource management and fiscal responsibility.

As part of the Sustainability Initiative, National is also promoting a Fundamentals of Sustainable Engineering (FSE) Certification Course as the first course in the program for Professional Certification in Sustainable Engineering (PCSE).

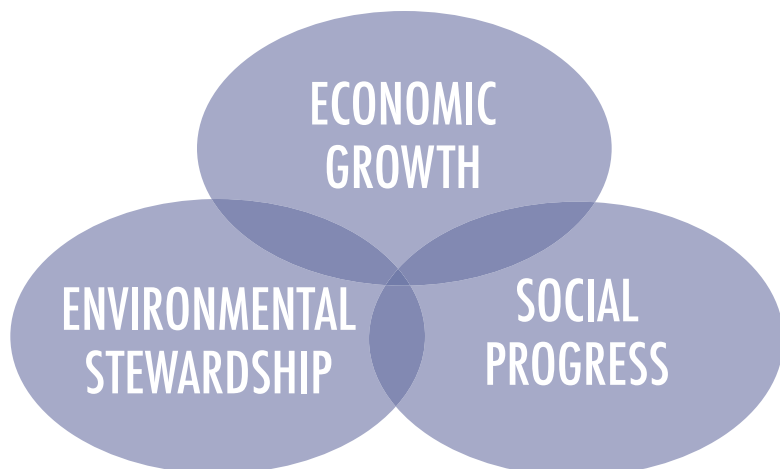
This past December ASCE, APWA, and ACEC had reached the stage to pilot test the rating system to evaluate its validity. A call for volunteers was announced for projects that would test the suitability of system coverage and processing, as well as the attainability of the objectives and achievement levels. The pilot test will last until early

February 2011, with the final toolkit roll out to be in the Summer of 2011.

Once the new rating system is launched, the Committee hopes to hold several seminars to provide section-level education on sustainable design. The Committee is also committed to building and nurturing relationships with outside groups who share the same vested interest in sustainability, as well as, educating the general public. Keep an eye out for updates on seminars and activities in the Section's newsletter and website!

Once the new rating system is launched, the Committee hopes to hold several seminars to provide section-level education on sustainable design.

The Illinois Section Sustainability Committee is dedicated to promoting sustainable civil infrastructure and looks forward to being part of this exciting National effort! **ASCE**



# Cost-Effective Earth Retention Systems

(continued from page 1)

back batter of 15 degrees from vertical. The top 5 feet of shale were shotcreted to prevent weathering. Global stability analysis indicated that nails were not required in the shale bedrock. The existing grade was approximately elevation 454 feet while the top of the ERS was designed to be 5 feet below the existing grade, requiring a 5-foot pre-cut slope at 1.5 horizontal to 1 vertical up to grade. The design included a construction surcharge of 250 psf around the east, south and west sides of the pit and east side of the ramp. In order for the general contractor to set forms for the structure, the north side of the pit and west side of the ramp were designed for a 150 ton crane surcharge approximately 20 feet from the face of the proposed structure.

The retention system design included 7 rows of nails beginning at elevation 448, spaced on 6-foot centers both horizontally and vertically installed in a 6-inch or 8-inch diameter hole. The nails within the top five rows for the pit were typically #10 Grade 75 threaded bar, 39 feet long while the

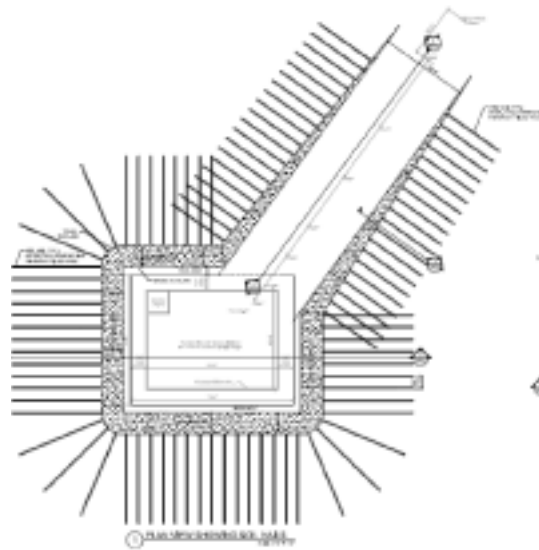


Figure 1. Plan view of the pit and ramp and ramp displaying extent of nails.

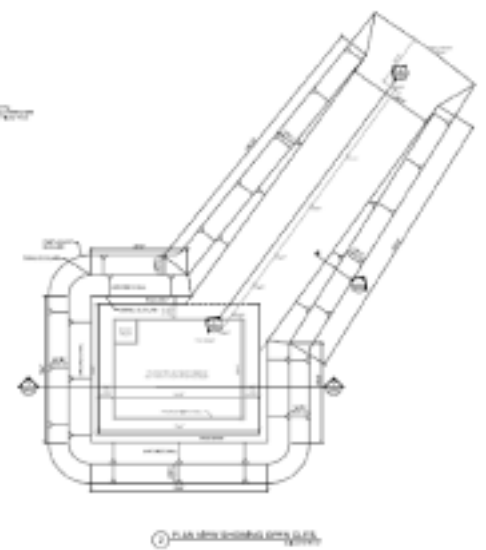


Figure 2. Plan view of the pit displaying pre-cut.

ramp nails were typically #9 Grade 75 threaded bars, 27 feet long. The nails along the north side of the pit and west side of the ramp were extended a few feet to cover the additional load presented by the crane surcharge. The lower two rows were considerably shorter due to bonding within the shale

in lieu of the overburden. The facing of the system included welded wire mesh, waler rebar and a 4-inch thick shotcrete face overlying 2-foot wide strips of drain board on 6-foot oc. See Figures 1-4 for design details.

Construction started in March/April 2009, generally the wettest time of the year for central-southern Illinois, and water control became a problem even before construction began. Because the job entailed excavating a deep hole on a very flat site, surface run-off eventually drained to or near the pit area from nearly the entire site. Even though the project team employed water control measures that included sump pumps, berms and drain lines prior to excavating, the period of time between the initial excavation and the installation of the retention system experienced multiple heavy rain events which lead to very wet conditions for the retention crews as shown in Figure 5. The excessively wet site slowed construction considerably.

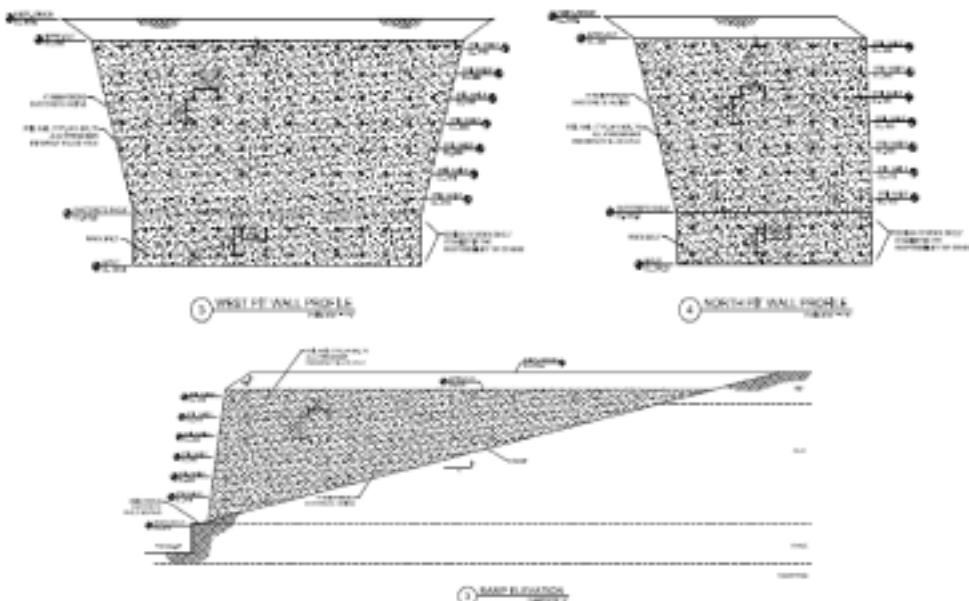


Figure 3. Profile views of the pit and ramp walls displaying nail layout.

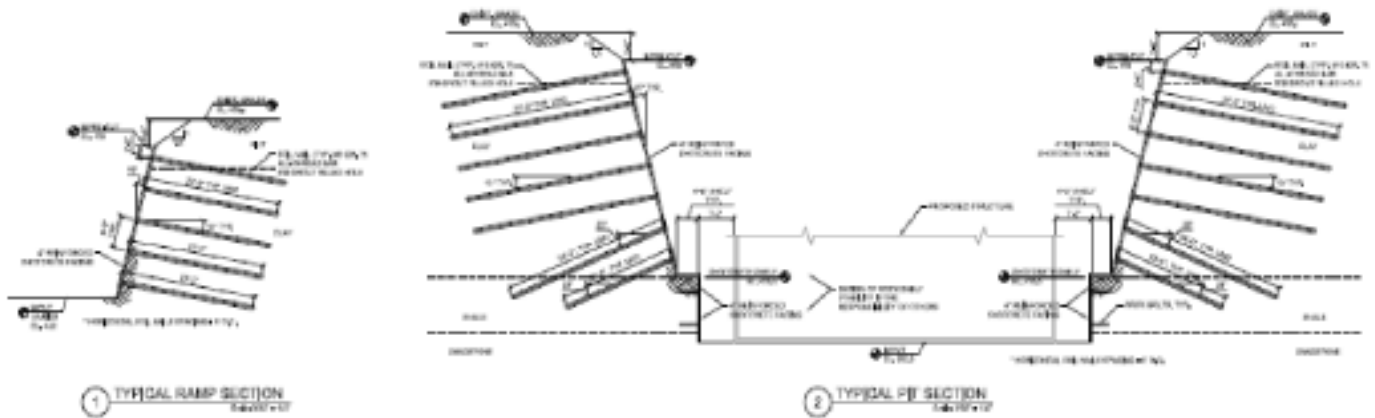


Figure 4. Cross section view of the main pit and ramp



Figure 5. Photograph illustrating wet conditions after the first lift excavated.



Figure 6. Photograph illustrating the sloughing of soil during the first lift drilling of the soil nails



Figure 7. Photograph of the soils nails being installed on the ramp.

An over-sized bit (nearly 10-inch diameter) with an 8-inch auger was used in order to maximize the bond capacity. The loessial soils were not cohesive enough to facilitate an oversized bit without sloughing into the excavation as illustrated in Figure 6. The sloughing of the soils led to excessive amounts of shotcrete being used to fill in where the soil had fallen away.

Despite some unforeseen setbacks during the beginning of the project, the excavation below the first lift became more stable as the groundwater conditions improved. The groundwater

conditions became more controlled due to additional measures including additional sump pumps and drainage board. A total of 512 soil nails were installed and over 18,000 square feet of shotcrete was applied. See Figures 7 and 8 for installation procedures. The system was installed successfully, two weeks ahead of the projected schedule. **ASCE**

For more information about this project, contact Marvin Iffert, P.E. ([mjiffert@haywardbaker.com](mailto:mjiffert@haywardbaker.com)), Jeff Hill, P.E. ([jrhill@haywardbaker.com](mailto:jrhill@haywardbaker.com)), or Shane Farr, P.E., S.E. ([sjfarr@haywardbaker.com](mailto:sjfarr@haywardbaker.com)). This article was provided by the Geotechnical Group.



Figure 8. Photograph of excavation through 6 rows of nails.

In an effort to inform Illinois Section members of the discussions at the monthly Board meetings, the Section Secretary contributes this monthly article to the newsletter. Any questions or comments on the Board activities are welcome by contacting Lou Arrigoni, at [larrigoni@envdesigni.com](mailto:larrigoni@envdesigni.com).

### ■ *Treasurer's Report*

▲ Treasurer Becq-Giraudon presented the Treasurer's Monthly Report. The Section and all Technical Groups are converting to Quick Books for financial reporting. The conversion has not gone as smoothly as was expected and may take some additional time to complete.

### ■ *Group Reports*

▲ All Groups presented a written report outlining previous and current month's activities.

### ■ *New Business*

▲ **Report Card Presentation:** President Olson, President-Elect Cussen and Government Relations Chair Gorski presented the Illinois Report Card to the Illinois Association of Highway Engineers on November 16th. There will be a presentation to the Western Society of Engineers in January or February.

▲ **Outstanding Section and Branch Newsletter Award:** The Illinois Section has won the Outstanding Section and Branch Newsletter Award. The award will be presented to the Section at the Young Leadership Conference in Dallas.

### ▲ **Outreach Activity with Chicago Architectural Foundation (CAF):**

The Illinois Section is partnering with CAF in supporting their monthly family day. If you are interested in offering support, please contact Pat Lach, chair of the Student Outreach Committee.

▲ **President- Elect Dinner:** The President-Elect Dinner is scheduled to take place April 6, 2011 at Maggiano's. Details will follow.

### ▲ **2013 CRYMC Leadership**

**Conference:** The Younger Members Group is looking to bring the CRYMC Leadership Conference to Chicago in 2013 and is looking for the Section to endorse the request.

### ■ *Old Business*

▲ **New Accounting Software:** ASCE National is converting to Quickbooks and is requiring all sections and branches to do the same. The software is being provided to the sections at no cost but all sections must convert. A Seminar for the New Accounting software is scheduled for December 16, 2010.

The next board meeting is scheduled for Monday, January 3, 2011, 5:30pm at MWH Americas, Inc., 175 West Jackson Blvd, 19th Floor.

By Lou Arrigoni, P.E., Secretary  
[larrigoni@envdesigni.com](mailto:larrigoni@envdesigni.com)

## Section Activities

J A N U A R Y 2 0 1 1

### Environmental Engineering & Water Resources Group

#### Committee Meeting

**Date:** Tuesday, January 11  
**Time:** 5:30 pm  
**Place:** MWH  
175 W Jackson Blvd, 19th Floor  
Chicago, IL 60604  
(Use elevator banks on the Van Buren side of the building.)  
**RSVP:** Heather Henneman at [hhenneman@sprynet.com](mailto:hhenneman@sprynet.com)

### Transportation Group

#### Executive Committee Meeting

**Date:** Tuesday, January 11  
**Time:** 5:30 pm to 6:30 pm  
**Place:** Christopher B. Burke Engineering  
9575 W. Higgins Rd.  
Rosemont, IL 60018  
**RSVP:** John Green at [greenjg@halcrow.com](mailto:greenjg@halcrow.com)

### Geotechnical Group

#### Joint Dinner Meeting with AEG

**Date:** Wednesday, January 12  
**Time:** 5:30 pm to 8:30 pm  
**Topic:** Organoclays for Variably Permeable Reactive Barriers (VPRB) to Manage NAPLs in Groundwater at a Tie-Treating Plant  
**Speaker:** Craig H. Benson, PhD, PE, DGE  
**Place:** The Parthenon Restaurant  
314 South Halsted Street  
Chicago, IL 60661  
**PDH:** 1.0 Hour  
**Cost:** \$40 Members  
\$30 Education and Government Employees  
\$20 for students (with reservation)  
**RSVP:** By Jan. 10th to Kalyani Devabhaktuni at [kdevabhaktuni@samconsultants.us](mailto:kdevabhaktuni@samconsultants.us) or 630-352-1146

### SEI Illinois Chapter (Structural Group)

#### Dinner Meeting

**Date:** Wednesday, January 12  
**Time:** 5:30 pm Cocktails  
6:00 pm Dinner / Presentation  
**Topic:** CTA Dearborn Track Renewal Project  
**Speaker:** Carole Morey, Vice President of Infrastructure at Chicago Transit Authority  
**Place:** Pazzo's, 311 S. Wacker Drive, Chicago, IL 60606  
**PDH:** 1.0 Hour  
**Cost:** \$40 (\$20 fulltime students) with RSVP on/before January 7, 2011  
\$45 without/late RSVP  
**RSVP:** By Jan. 7th to [asce.il.struct@gmail.com](mailto:asce.il.struct@gmail.com)  
**Questions:** Dennis Morgan at (312) 575-3940

### Environmental Engineering & Water Resources Group

#### Review Course / Exam

**Date:** January 13-14  
**Time:** 8:30 am to 1:00 pm  
**Topic:** Certified Professional in Erosion and Sediment Control (CPESC) Review and Exam  
**Place:** Lake County Stormwater Management Commission, Libertyville, IL  
**Cost:** \$220 ASCE Members  
\$250 Non-Members  
\$200 Government  
**RSVP:** By Dec 1 to Don Oliphant at [doliphant@cbbel.com](mailto:doliphant@cbbel.com) or 847-823-0500

### Transportation Group/Urban Planning and Development

#### Group Luncheon

**Date:** Thursday, January 20  
**Time:** 11:30am to 1:30 pm  
(11:30 social, 12:00 lunch, 12:40 speaker)  
**Topic:** Services and Research UIC/UTC Provides to Solve Metropolitan Transportation Challenges  
UTC's partial client list includes: CDOT, CTA, and RTA.  
**Speaker:** Steve Schlickman, UIC Urban Transportation Center (UTC) Executive Director  
**Place:** Maggiano's Downtown Location  
516 N. Clark Street  
Chicago, IL 60654  
**PDH:** 1.0 Hour  
**Cost:** \$40 ASCE Members  
\$50 Non-Members  
\$35 Governmental Employees  
\$15 Student Members  
**RSVP:** By noon Jan 17 at <https://www.123signup.com/event?id=vzmx>

**Questions:** Matt Huffman at [mhuffman@cbbel.com](mailto:mhuffman@cbbel.com) or Shane Schneider at [shane.schneider@tylin.com](mailto:shane.schneider@tylin.com)

### Younger Member Group

#### Dinner Meeting

**Date:** Wednesday, January 26  
**Time:** 5:30 pm  
**Topic:** CMAP "Go To 2040" Plan  
The GO TO 2040 comprehensive regional plan seeks to maintain and strengthen our region's position as one of the nation's few global economic centers. Prosperity is driven largely by a combination of infrastructure, overall business environment, workforce, and amenities. To remain an attractive place for workers and businesses,

(continued on page 10)

(continued from page 9)

our region has numerous needs, which are addressed in the GO TO 2040 Plan.

**Place:** Parsons Brinckerhoff  
230 West Monroe Street, Suite 900  
Chicago, Illinois 60606

**RSVP:** David Gloss at [gloss@pbworld.com](mailto:gloss@pbworld.com)

### **SEI Illinois Chapter (Structural Group)**

*Lecture Series – Session 1*

**Date:** Wednesday, March 2

**Time:** 5:00 pm to 8:00 pm

**Topic:** Sustainable Structures – Sustainable Practices

**Speakers:** Emily Lorenz (CTLGroup) and Ken Maschke & Rachel Michelin (Thornton Tomasetti)

**Place:** Harold Washington Library  
400 S. State Street  
Chicago, IL 60605

**PDH:** 2.5 Hours

**Cost:** \$75 per session or \$275 for all four sessions. Government employee, full time student, and group rates apply.

**RSVP:** Register online at [www.123signup.com/register?id=vzttr](http://www.123signup.com/register?id=vzttr)

**Questions:** Victor Van Santen at [asce.il.struct@gmail.com](mailto:asce.il.struct@gmail.com) or (773) 380-7966

### **SEI Illinois Chapter (Structural Group)**

*Lecture Series – Session 2*

**Date:** Wednesday, March 16

**Time:** 5:00 pm to 8:00 pm

**Topic:** Sustainable Structures – Local Structures

**Speakers:** Charlene Walsh (Chicago Department of Transportation) and Steven Olson (Solomon Cordwell Buenz)

**Place:** Harold Washington Library  
400 S. State Street  
Chicago, IL 60605

**PDH:** 2.5 Hours

**Cost:** \$75 per session or \$275 for all four sessions. Government employee, full time student, and group rates apply.

**RSVP:** Register online at [www.123signup.com/register?id=vzttr](http://www.123signup.com/register?id=vzttr)

**Questions:** Contact Victor Van Santen at [asce.il.struct@gmail.com](mailto:asce.il.struct@gmail.com) or (773) 380-7966

### **SEI Illinois Chapter (Structural Group)**

*Lecture Series – Session 3*

**Date:** Wednesday, March 30

**Time:** 5:00 pm to 8:00 pm

**Topic:** Sustainable Structures – International Structures

**Speakers:** Robert Sinn (Thornton Tomasetti) and Bruce Kuwabara (KPMB Architects)

**Place:** Harold Washington Library  
400 S. State Street  
Chicago, IL 60605

**PDH:** 2.5 Hours

**Cost:** \$75 per session or \$275 for all four sessions. Government employee, full time student, and group rates apply.

**RSVP:** Register online at [www.123signup.com/register?id=vzttr](http://www.123signup.com/register?id=vzttr)

**Questions:** Contact Victor Van Santen at [asce.il.struct@gmail.com](mailto:asce.il.struct@gmail.com) or (773) 380-7966

### **President Elect and Student Scholarship Spring Dinner**

**Date:** April 6, 2011

**Place:** Maggiano's  
111 W. Grand Ave.  
Chicago, IL

More Information to follow.

## SEI Illinois Chapter (Structural Group)

### Lecture Series – Session 4

**Date:** Wednesday, April 13

**Time:** 5:00 pm to 8:00 pm

**Topic:** Sustainable Structures – Specialty Structures

**Speakers:** Siamak Daneshvaran (Aon Benfield) and Jim Schroder (Schroder and Associates)

**Place:** Harold Washington Library  
400 S. State Street  
Chicago, IL 60605

**PDH:** 2.5 Hours

**Cost:** \$75 per session or \$275 for all four sessions. Government employee, full time student, and group rates apply.

**RSVP:** Register online at [www.123signup.com/register?id=vztttr](http://www.123signup.com/register?id=vztttr).

**Questions:** Contact Victor Van Santen at [asce.il.struct@gmail.com](mailto:asce.il.struct@gmail.com) or (773) 380-7966

## ASCE National Activities

### 2011 Legislative Fly-In

*Washington, D.C.*

**Date:** March 29-31

This inside look at the political process begins with briefings on the latest civil engineering issues pending in Congress, then a visit with your Representatives and Senators on Capitol Hill to educate and lobby them on the issues. Successful applicants will be notified by February 11, 2011.

<http://www.asce.org/Content.aspx?id=7364>

**Questions:** Bob Gorski at [Robert.Gorski@hdrinc.com](mailto:Robert.Gorski@hdrinc.com)

## Other Organizations

### Future City Competition – Chicago Regional Finals

Maybe you and/or a colleague can assist in providing the needed guidance is assisting the students design their FUTURE CITY as they prepare for the Regional Finals.

**Date:** Saturday, January 29, 2011

**Place:** University of Illinois at Chicago  
750 South Halsted.

Judging of the projects will begin 8:30 a.m. and end at 2:30 p.m. The winners will be announced at an Awards Ceremony beginning about 3:00 p.m. The student models will be on display until the conclusion of the awards ceremony. The public is invited and encouraged to see the vision of the future as seen by Chicagoland's 6th, 7th and 8th grade students.

**Cost:** There is no cost to attend.

**Questions:**

Don Wittmer, 312-930-9119  
[dewittmer@hntb.com](mailto:dewittmer@hntb.com)  
[www.futurecitychicago.org](http://www.futurecitychicago.org)

### 27th Annual DuPage Engineers Week Expo

**Date:** Saturday, February 26

**Time:** 11:00 am to 3:30 pm

**Place:** Illinois Institute of Technology –  
Rice Campus  
201 East Loop Drive  
Wheaton, IL 60189

**Audience:** The program is geared for K-8. However everyone is welcome!

**Cost:** Free

**Additional Information:**

[www.dupagecweek.iit.edu](http://www.dupagecweek.iit.edu)

If you wish to be deleted from this distribution, please email us at [lists@asce.org](mailto:lists@asce.org), log onto [www.asce.org](http://www.asce.org), or call ASCE headquarters at 800-548-ASCE (2723). Please indicate the distribution list you wish to be deleted from.

If changing your email address, please give old email address and new email address. This announcement e-mail uses your current official ASCE EMAIL ADDRESS OF RECORD.

For more information, please visit the Illinois Section ASCE web site at <http://www.isasce.org>

# Calendar

2011

January 11	Environmental Engineering & Water Resources Group Committee Meeting	January 26	Younger Member Group Dinner Meeting CMAP "Go To 2040" Plan
January 11	Transportation Group Executive Committee Meeting	January 29	Future City Competition - Chicago Regional Finals Become a mentor or attend the competition or both!
January 12	Geotechnical Group Joint Dinner Meeting with AEG Organoclays for Variably Permeable Reactive Barriers (VPRB) to Manage NAPLS in Groundwater at a Tie-Treating Plant	February 26	27th Annual DuPage Engineers Week Expo
January 12	SEI Illinois Chapter (Structural Group) Dinner Meeting CTA Dearborn Track Renewal Project	March 2	SEI Illinois Chapter (Structural Group) Lecture Series - Sustainable Structures Session 1: Sustainable Practices
January 13-14	Environmental Engineering & Water Resources Group Review Course/Exam Certified Professional in Erosion and Sediment Control (CPESC) Review and Exam	March 16	Session 2: Local Structures
January 20	Transportation Group / Urban Planning and Development Group Luncheon Services and Research UIC/UTC Provides to Solve Metropolitan Transportation Challenges	March 30	Session 3: International Structures
		April 13	Session 4: Specialty Structures
		March 29-31	2011 Legislative Fly-In, Washington, D.C.
		April 6	President Elect and Student Scholarship Spring Dinner

PLEASE VISIT [ISASCE.ORG](http://ISASCE.ORG) FOR MORE INFORMATION REGARDING ILLINOIS SECTION ACTIVITIES AND EVENTS