



ASCE

ILLINOIS SECTION

NEWSLETTER

Vol. 36 No. 8

American Society of Civil Engineers

July/August 1995

IN THIS ISSUE

Unique Foundation System
Pages 1 and 7

Minority Committee
Page 2

President's Notes
Page 3

Awards Program Nominations
Page 3

Proposed Bylaws Changes
Pages 4 and 5

Officer Nominations
Page 6

Congratulations
Page 7

Section Activities
Page 8

ILLINOIS SECTION NEWSLETTER

Mailed to all ASCE-IS dues-paying members

American Society of Civil Engineers
Illinois Section — Zone III — District 8

Editor—Arvind Thakkar

Fluor Daniel, Inc.
200 W. Monroe St., Chicago, IL 60606
(312) 368-3843 FAX: (312) 368-3746

Assistant Editor—Janice Schultz

4049 N. Marmora, Chicago, IL 60634
Phone and FAX: (312) 282-3304

News Coordinator—Bob Camillone

Material & Guideway Systems Company
14409 Maycliff Dr., Orland Park, IL 60462
Phone: (708) 349-2790

Pres. William Babcock (708) 297-5358
Pres.-Elect John Carrato (312) 565-0450
Sec. Allen Staron (312) 902-7100
Treas. Christopher Burke (708) 823-0500

Send change of address notices to the Secretary,
Illinois Section ASCE, 203 N. Wabash, Room
1000, Chicago, IL 60601; or call (312) 263-1606,
FAX (312) 372-5673.

**Submittal deadline
for the September Newsletter
is Aug. 7, 1995**

Unique Foundation System for New Building

Construction of a 10- to 12-story combination parking structure and office building is under way at 1911 S. Indiana Ave. in Chicago. The new structure is of reinforced concrete design with 24 ft. x 40 ft. bays. The lower levels are parking, with upper levels as office space. The lowest floor has half of the structure at grade, with the other half depressed about 4 feet. Initial construction will be to 10 stories, with two additional floors added at a later date as the need arises. Maximum design column loads are 2700 kips.

The soil profile at the site consists of medium dense to dense sand and sandy silt to a depth of about 16 feet, followed by a stiff clayey crust underlain by soft compressible clay, gradually increasing in strength to stiff, extending to a depth of about 65 feet. There a thin, sometimes non-existent, very stiff to hard silty clay exists, underlain by layers of dense to very dense water-bearing sandy silt, which extend to limestone bedrock at 90 feet. Because of the potential for squeezing of soft clays and the relative thinness of an adequate bearing layer at depth, a preliminary geotechnical report prepared for the site recommended against the use of conventional belled caissons for this project as too risky and expensive. STS Consultants, Ltd., was retained to further evaluate a shallow foundation solution and provide cost-effective methods for reducing the anticipated settlement. A supplementary field exploration program was performed consisting of five borings, including in-situ pressuremeter tests conducted with the upper sands just below anticipated footing level, pressuremeter testing within the

lower silty sands just below potential deep caisson bearing level, in-situ vane shear testing within the soft clay below footing level and selective, undisturbed three-inch diameter piston sampling of soft clay for consolidation testing, as well as shallow and deep water table measurements.

Shallow Foundation Analysis

Because of the presence of the upper dense sand layer and the stiff crust, strip footings were a possibility for support of the structure as they act in effect like a mat when combined with the dense sand layer. Because of the stress spreading effect of the dense sand and stiff clay layer, the actual bearing pressure design of the footings has little influence on the ultimate settlement since it is the average stress increase in the underlying soft clay resulting from the total weight of the building that causes the settlement. Calculated maximum settlement for this equivalent mat case was 8 inches, with 2-3 inches occurring during construction and 5-6 inches thereafter. This was considered excessive, and it ruled out shallow-foundation-only solutions.

Deep Foundation Analysis

Various deep foundation solutions were considered, including rock caissons, piles, and straight-shaft caissons, but cost estimates on all solutions were outside of the project budget.

Combination System Analysis

To take advantage of the lower cost of the strip footing solution while trying to reduce the settlement to an acceptable range, a combination system was designed. The com-

(continued on page 7)

Section's Minority Committee — An Overview

The Illinois Section of ASCE maintains an active interest in promoting engineering as a career to the Chicago area's minority community through its Minority Committee. The Section participates in a three-week summer program held on the campus of the University of Notre Dame in South Bend, Indiana, called "What is Engineering?" This program is designed for high school juniors and seniors who are interested in engineering as a career.

The committee spends a great deal of its yearly efforts recruiting Chicago-area high school juniors and seniors who might benefit from this program. We currently have a mailing list of about 80 high schools in the Chicago area. All of the high schools in the Chicago Public School System are included in this list, with suburban high schools and contacts provided by interested ASCE members.

The program at Notre Dame has been selected from other similar programs at other area universities for several reasons:

1. Notre Dame's program is the most extensive; a three-week program involving classroom as well as laboratory activities, visits of construction sites and manufacturing plants, hands-on computer usage, etc. Most other programs are week-end programs that are not as comprehensive as Notre Dame's program.

2. Students live on campus in dormitories. They get a "feel" for what to expect from a college environment.

3. ASCE National gives their "seal of approval" to this program.

4. The committee occasionally reviews options at other universities and has consistently stayed with the Notre Dame program.

The Illinois Section has sponsored an average of eight students per year in this program since 1990. In the summer of 1995, nine students are scheduled to attend this program.

The Illinois Section and Notre Dame team will pick up the entire cost of the program. Notre Dame covers as much of the tuition and room and board as they can with the support of university donations. They pass along to the Illinois Section the remaining costs. ASCE National has in the past donated funds to Notre Dame for this program, but recently

has discontinued these donations. The cost per student paid by the Illinois Section has varied from \$300 in 1990 to the \$650 we will be paying in 1995. In addition, the Illinois Section purchases round-trip bus tickets for students who require transportation.

The Illinois Section raises its share of the cost through a variety of sources. The Illinois Section Board budgets a certain amount for the program at the beginning of the fiscal year. This amount is supplemented through a fund-raising campaign. Key Illinois Section member firms are contacted and asked to make a contribution toward the program. In addition, certain Illinois Section Technical Divisions that are known to carry a surplus in their treasury accounts are solicited for donations. We understand that in August, 1995, the First Annual Illinois Section Golf Outing will be held, with proceeds going toward the Minority Committee.

From 1990 to 1995, the Chairman of the Committee has been Cleighton

Smith of Harza Engineering. The year 1995 is a transition year; the chairmanship is being transferred to Joe Johnson of Harza Environmental Services. Joe and Cleighton have, therefore, been working closely on the 1995 activities. Other Illinois Section members who have assisted the Committee greatly include Bill Bergamann of the Metropolitan Water Reclamation District of Greater Chicago. Bill serves on the ASCE (National) Minority Committee, and is currently working with Notre Dame to get ASCE National to resume contributions to this program. Sham Dabadghao of UBM is also an active member of the committee. Teresa Rubinos of Rubinos and Mesia is a past chairperson of the committee and has been a good source of information from time to time.

For more information on the Illinois Section Minority Committee, please call Cleighton Smith at (312) 831-3140 or Joe Johnson at (312) 831-3821.

Cleighton Smith

Pavement Management Engineer

IMS Infrastructure Management Services, Inc., the leader in pavement management, provides a full range of pavement management services and products to government agencies and private companies in North America. IMS is part of a worldwide organization of people managing for better pavements and dedicated to improving our clients' pavement and infrastructure systems.

The engineer applying for this position must possess a degree in civil engineering or transportation engineering with experience in pavement design or analysis. The applicant must hold a Professional Engineer license or be able to obtain license within six months. The applicant must have five years experience working with city, county and state highway engineers; understand pavement and highway analysis procedures and statistics; and must know common computer application programs. The applicant must possess good writing and communication skills. Since the position involves training others, technical seminar-type teaching experience is desired. Travel is required in order to serve clients throughout the United States and Canada.

This position is a career opportunity resulting from expanding business. It offers a total compensation package including a competitive salary and comprehensive health, dental and retirement benefits. IMS is an equal opportunity employer. Please submit resume in confidence or call:

Dominick J. Gatto, P.E.

IMS Infrastructure Management Services, Inc.

3350 Salt Creek Lane

Arlington Heights, IL 60005

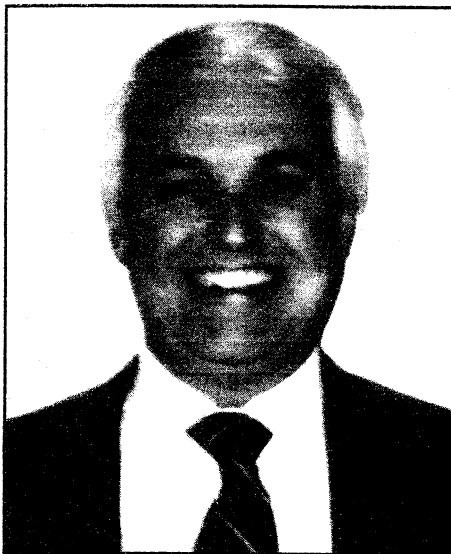
1-800-IMS-7110

PRESIDENT'S NOTES

I want to use this opportunity to explain the actions that your Illinois Section (IS) Board is taking to update the IS Constitution and Bylaws, as well as publish the new Directory. We are planning to issue the new Directory this fall, immediately after the Bylaws are revised. The Bylaws are being changed in accordance with the existing Bylaws that require an affirmative vote of two-thirds of the active members present at an advertised meeting, with the purpose of considering such changes. The existing Bylaws can be found in the front of the 1992 IS-ASCE Membership Directory.

The IS has been operating at the fringe of its governing documents for as long as I can remember, I expect due to inertia and a lack of urgency. None of the transgressions, in my mind, are serious; however, we wanted to clean up the wording and eliminate as many inconsistencies as possible. One of the interesting features of the Constitution is that there is no practical way to amend it, given the present demographics and size of the organization. More on that subject later.

The proposed changes are the result of your Directors' good work, with the concurrence of the Board. As you will see, we are not making any sharp turns in the direction of the IS; rather, we are bringing the Bylaws into sync with the realities of the organization as it is today. The majority of the changes make the language gender-neutral, in keeping with previous actions in the IS and the Society in general. The change from Technical Divisions to Technical Groups is a semantics issue to bring the IS into compliance with ASCE National and our own Bylaws. There will be no change in the operation, financing, control, success or failure of these subsidiary organizations as a result of this modification. Several changes merely acknowledge changes made along the way, such as the name of the newsletter and the dues structure. The treasurer's reporting date was moved back to allow the previous year's books to be closed and the incoming President's budget to be presented at the same time for comparison. This date change is insignificant given the lack of reporting that has



traditionally been done. Although the books have always been open to anyone, and are provided in the annual report to National, addressing this issue has created an increased awareness on the part of the officers that communicating financial information has been sorely neglected. We plan to correct this starting at the beginning of the new term.

The founding fathers of our Section apparently envisioned a small, active membership, because they left us with a Constitution that requires a vote involving no less than a majority of the membership. The Board and National agree that this won't happen, so we will leave the Constitution untouched at this time, with a goal of making the changes administratively over the next several years. Other sections have faced a similar situation and have used this end-run approach to solve the problem. Better that we blatantly violate the Constitution than to suffer the indifference of the membership.

The issues regarding the Constitution are also either minor or are required to reflect the realities of IS management. Beyond a single gender change and some administrative dates, the major issue will center on the method of electing officers, which is in conflict with the existing Bylaws and the traditional *modus operandi* of the IS.

We trust that these changes meet with your satisfaction. As always, we would enjoy hearing from you on this or any other issue.

Bill Babcock

Volunteers Needed For Future City Competition

The Illinois Section ASCE and Fluor Daniel, Inc. are co-sponsors of this year's Chicagoland National Engineers' Week Future City Competition. The competition is for seventh- and eighth-grade students to foster interest in engineering, math and science through hands-on computer modeling, essay writing, oral presentations and model building of a future city.

The Section needs volunteer engineers to assist with the competition by mentoring students at participating schools. You will be given background information on the competition, an orientation of the computer program, and lots of help from the coordinators. Each mentor can anticipate a Saturday orientation, three to four visits to the school group (can be arranged for after school or on weekends), and to attend the competition judging day. This is an excellent chance to promote our profession and provide a public service. Please call Chris Rops at (312) 930-9119 to sign up or to get more information.

Bill Babcock
IS-ASCE President

Civil Engineer

Key position as Senior Project Engineer open for candidate with 5+ years in Land Development, Municipal and General Civil Engineering; strong design background in AutoCAD; general computer proficiency; and ability to supervise technical support staff. Excellent long-term career opportunity for professional growth, with competitive salary and full company benefits.

Send resume with cover letter to:

McBride Engineering, Inc.
3649 W. 183rd Street
Hazel Crest, IL 60429

Equal Opportunity Employer

Proposed Changes to Illinois Section Bylaws

The ASCE Illinois Section Board of Directors has proposed the following changes to the Section's Bylaws. The changes have been proposed to reflect more accurately the way in which Section activities are currently being carried out. In addition, references to gender have been omitted.

The Board of Directors will vote to incorporate these changes at the Aug. 7, 1995 Board meeting, to be held at 5:30 p.m. at the Knight Engineering Building, 549 W. Randolph St., Chicago, Illinois. Persons wishing to voice an opinion regarding these changes are wel-

come to attend the meeting. Comments can also be mailed to the ASCE Illinois Section, 203 N. Wabash Ave., Room 1000, Chicago, IL 60601. Mailed comments must be received before the August Board meeting in order to be considered.

Article Number	Existing Article	Proposed Change (changes underlined)
Article II, Section 5	Any board member or officer of the Section who is absent for three consecutive Board meetings without cause shall be deemed to have submitted his resignation.	Any board member or officer of the Section who is absent for three consecutive meetings without cause shall be deemed to have <u>resigned</u> .
Article II, Section 6	A President Elect shall be elected each year. A Director shall not succeed himself after serving two consecutive terms.	A President Elect shall be elected each year. A Director shall not <u>serve more than two</u> consecutive terms.
Article III, Section 2	Nominating Procedure: a) Nominations shall be made for each elective office. No member of the Nominating Committee shall be eligible for nomination by the committee, b) The Nominating Committee shall file its report with the Secretary no later than June 15. This report shall be published in the Illinois Section News no later than the July issue or three months prior to the Annual Meeting, c) Petitions to file additional nominations shall be received by the Secretary no later than August 15 or two months prior to the Annual Meeting and shall be signed by not less than 15 Active Members of the Section. The Board of Directors shall determine if the petition is valid.	Nominating Procedure: a) Nominations shall be made for each elective office. No member of the Nominating Committee shall be eligible for nomination by the committee, b) The Nominating Committee shall file its report with the Secretary no later than June 15. This report shall be published in the Illinois Section <u>Newsletter</u> no later than the July issue or three months prior to the Annual Meeting, c) Petitions to file additional nominations shall be received by the Secretary no later than August 15 or two months prior to the Annual Meeting and shall be signed by not less than 15 Active Members of the Section. The Board of Directors shall determine if the petition is valid.
Article III, Section 3	Election Procedure: a) Should there be no petitions filed for additional nominations by August 15, the Board of Directors shall declare the nominees for the noncontested offices elected. b) Should a valid petition for additional nominations be filed and validated, the ballot bearing the names of those nominated for the contested office shall be mailed as part of the Illinois Section News or at the discretion of the Board of Directors by separate letter ballot, with envelopes for returning marked ballots, not less than 30 days prior to the Annual Meeting to all Active Members of record July 15. c) In order to be valid, ballots shall be returned to the Secretary in two sealed envelopes. The outer envelope shall be endorsed by the voter's signature. A voter may withdraw his ballot and substitute another at any time before the polls close. d) The polls shall close at 12:00 noon on the 10th day preceding the Annual Meeting. The ballots shall be counted by not less than three Tellers appointed by the President. The candidate receiving the largest number of votes shall be declared elected. In case of a tie for any office, the Active Members attending the Annual Meeting shall elect the officer from among the persons so tied.	Election Procedure: a) Should there be no petitions filed for additional nominations by August 15, the Board of Directors shall declare the nominees for the noncontested offices elected. b) Should a valid petition for additional nominations be filed and validated, the ballot bearing the names of those nominated for the contested office shall be mailed as part of the Illinois Section News or at the discretion of the Board of Directors by separate letter ballot, with envelopes for returning marked ballots, not less than 30 days prior to the Annual Meeting to all Active Members of record July 15. c) In order to be valid, ballots shall be returned to the Secretary in two sealed envelopes. The outer envelope shall be endorsed by the voter's signature. <u>A ballot may be withdrawn by the voter and substituted by another</u> at any time before the polls close. d) The polls shall close at 12:00 noon on the 10th day preceding the Annual Meeting. The ballots shall be counted by not less than three Tellers appointed by the President. The candidate receiving the largest number of votes shall be declared elected. In case of a tie for any office, the Active Members attending the Annual Meeting shall elect the officer from among the persons so tied.

(continued on next page)

(continued on next page)

Proposed Changes to Illinois Section Bylaws

Article Number	Existing Article	Proposed Change (changes underlined)
Article V, Section 1	The annual dues shall be \$5.00 for members in the student grade of membership and \$10.00 for members in all other grades of membership.	The annual dues shall be as set forth below: <div style="display: flex; justify-content: flex-end;"> <div style="text-align: right;"> <p>Student Member \$00.00</p> <p>Associate Member \$20.00</p> <p>Member \$20.00</p> <p>Fellow Member \$20.00</p> <p>Honorary Member \$00.00</p> <p>Affiliate Member \$20.00</p> <p>Life Member \$00.00</p> </div> </div>
Article V, Section 3	At the end of the year a treasurer's report corresponding in form to the approved budget shall be transmitted to the membership before December 1.	At the end of the year a treasurer's report corresponding in form to the approved budget shall be transmitted to the membership <u>by January 1.</u>
Article VI, Section 3	Subsidiary organizations may be, but are not limited to, branches, younger member forums, and technical divisions. Names of subsidiary organizations shall be as set forth in Policy and Procedures of the American Society of Civil Engineers.	Subsidiary organizations may be, but are not limited to, branches, younger member forums, and technical <u>groups.</u> Names of subsidiary organizations shall be as set forth in Policy and Procedures of the American Society of Civil Engineers.
Article VI, Section 5	Subject to the approval of the Illinois Section Board, each subsidiary organization may establish its own separate dues schedule. Any subsidiary organization may maintain a separate Treasury, provided that all funds of each subsidiary organization shall be held in one treasury. In the event that the amount in an organization's separate treasury exceeds \$2,000.00, the organization shall bond its treasurer and pay the cost of the bond from its treasury. Subsidiary organizations shall substantiate any requests for funds from the Illinois Section Board.	Subject to the approval of the Illinois Section Board, each subsidiary organization may establish its own separate dues schedule. Any subsidiary organization may maintain a separate Treasury, provided that all funds of each subsidiary organization shall be held in one treasury. In the event that the amount in an organization's separate treasury exceeds \$2,000.00, the organization shall bond its treasurer and pay the cost of the bond from its treasury. Subsidiary organizations shall substantiate any requests for funds from the Illinois Section Board.
Article VI, Section 6	Officers and committees chairmen of subsidiary organizations shall be Active Members of the Illinois Section. Election and terms of office shall parallel elections and terms of office of the Illinois Section.	Officers and committees <u>chairs</u> of subsidiary organizations shall be Active Members of the Illinois Section. Election and terms of office shall parallel elections and terms of office of the Illinois Section.
Article VI, Section 9	Subsidiary organizations in existence at the time of adoption of this Article shall conform to, and be governed by, the provisions herein.	<u>All</u> Subsidiary organizations shall conform to, and be governed by, the <u>Section's Bylaws and Constitution.</u>

What Has ASCE Done For You Lately?

1. Enhanced image of civil engineering.
2. Expanded technical publications.
3. Encouraged quality and excellence in engineering.
4. Improved member services and benefits.
5. Supplied career-management resources to members.
6. Supported education and professional development.
7. Represented civil engineers in the public sector.
8. Influenced legislation impacting the profession.
9. Enhanced ASCE's global presence.
10. Conducted and supported civil engineering research.

New IEC Delegate

We are pleased to announce that Bill Macaitis, past IS President (1987-88) is our new Delegate to the Illinois Engineering Council. Bill will serve as a Director on the IEC Board. He replaces Don Pries, who held the same positions since 1993. Thanks to both for their good service.

The IS is allowed four delegates on the IEC. Anyone interested in serving in this capacity or getting involved in the Engineers' Week activities should call Bill Babcock.

Officer Nominations for '95-'96

Your Illinois Section Board is proud to propose the following slate of candidates for the 1995-1996 fiscal year:

President-Elect: **Allen Staron**

Secretary: **Richard A. Walther**

Directors (1995-1997):

Chris Rops, Jamil Bou-Saab & Michael Sutton

All agree to serve if elected. Additional nominations for any of these offices may be submitted by petition signed by at least 15 active members of the Section. Submit petitions to Allen Staron, current Secretary of the Section, in care of the Section office. Petitions must be received by Aug. 15, 1995.

President-Elect

Allen Staron has served on the Illinois Section Board as Secretary, Director, and as the first Chair of the Transportation Division. He is a Registered Professional Engineer in Illinois and directs the Transportation Engineering Department for RUST Environmental & Infrastructure's Chicago office. Mr. Staron holds a BSCE degree from the University of Illinois at Urbana-Champaign and an MBA degree from DePaul University. His engineering experience includes highway design, transportation planning, transit design, airport engineering, roadway construction, site development, and management of major public works projects for state and municipal agencies.

Secretary

Richard Walther has served on the Illinois Section Board as a Director, Chair of the Structural Division, Chair of the Awards Committee, and Chair of the Structural Division's 1995 Lecture Series. He started in ASCE as President of the Student Chapter at Purdue University. Rich is a Registered Professional Engineer and a Registered Structural Engineer with the firm of Wiss, Janney, Elstner Associates, Inc. He holds Bachelor and Master of Science degrees in civil engineering from Purdue. His experience includes instrumentation, testing and evaluation of steel bridge structures, with a special emphasis on fatigue and fracture problems.

Directors

Chris Rops has served on the Illinois Section Board as Chair of the Associate Member Forum, Chair of the first Illinois Section Golf Outing, ASCE liaison for the 1995 Engineers' Week Program, and has served on the Awards Committee. He is a Registered Professional Engineer in Illinois and is a senior engineer for the firm of HNTB in Chicago.

Jamil Bou-Saab is a new addition to the Illinois Section Board, but has been active in both the Environmental Engineering & Water Resources Division and the Transportation Division for several years. He is a Registered Professional Engineer in Illinois and Wisconsin and is a partner with Terra Engineering in Chicago, with specialties in site development, transportation and public works projects.

Michael Sutton is the outgoing Transportation Division Chair. He is a Registered Professional Engineer in Illinois and is the Operations Manager for UBM Engineering, Inc. His responsibilities include business development, administration and project management.

CERTIFICATE PROGRAM

Rediscovering the Lost Art of Selling

Business-to-business companies need qualified sales people. This overlooked career area, which includes sales of complex, technological products and services, offers many opportunities for entry-level positions, for technically educated professionals seeking a new career area, and for experienced sales people in the consumer market looking for a new field.

These same companies also want all of their employees—scientists, engineers, technical service personnel, product designers—to learn how to become more skillful in dealing with customers as they perform any jobs that involve customer contact.

Rediscover the lost art of selling in this Certificate Program in Professional Selling to Business and Industry. Now in its second year, this four-course program will teach you how to match product benefits with customer needs, how to improve your communication and presentation skills, how to deal with customer problems, how to improve company-customer relations, how to use new selling methods—all the information, tools and skills needed to sell your products and services, your company, and yourself.

- Taught by sales professionals and expert teachers using hands-on, interactive learning methods
- Four-course program which can be completed in two semesters
- Courses offered on weeknights at two locations
- Earn credit toward an MBA at the Stuart School of Business of IIT

Classes begin the week of August 28. Call or write for a brochure and more information.

Stuart School of Business
IIT's Downtown Center
565 West Adams Street
Chicago, IL 60661-3691
312/906-6516

IIT's Daniel F. and
Ada L. Rice Campus
201 East Loop Road
Wheaton, IL 60187
708/682-6008

Unique Foundation System For New Office Building

(Continued from page 1)

Foundation consists of nine- to 14-foot-wide continuous strip footings supported on the surface dense sand layer and five- to six-foot-diameter straight-shaft caissons extended down to the dense water-bearing sand and silt layer. It was anticipated that the straight shafts could be excavated and filled with concrete before water seepage became a problem (not possible for belled caissons).

The design contemplates approximately 60% of the building load being initially supported by the strip footings, with 40% carried by the straight shafts, with this ratio reversing with long-term consolidation of the soft clay reacting to the strip footing pressures. The combination of strip footing and straight shaft reduces the projected settlement to less than one-third of that predicted for the strip footing or mat foundation solution alone. Since the straight shafts are considered primarily as settlement reducers, a higher than normal bearing pressure can be accepted consistent with the desired settlement limitation. The design approach is relatively unique in that sense that the settlement reducing elements carry the load primarily in end bearing rather than in side friction, which is the common system where a mat on settlement reducing piles is normally utilized.

The structural engineer has designed the strip footing to withstand a range of soil pressure since it is not possible to guarantee the exact load distribution between footing and shaft, particularly with time, as the soft clay consolidates. Ultimate projected settlement for the combination system is in the range of two to three inches, compared to eight inches for the strip footings only.

In order to determine how much load actually gets distributed into the ground, strain gauges have been placed in two representative shafts and first-floor columns to monitor the load to see how much gets into the shafts compared to the strip footing. The soil profile, foundation schematic and instrumentation are shown in Figure 1. As of the writing of this article, the construction is up to the eighth floor and the strain gauges indicate approximately 70% of the estimated load going into the shafts. Reported settlement to date

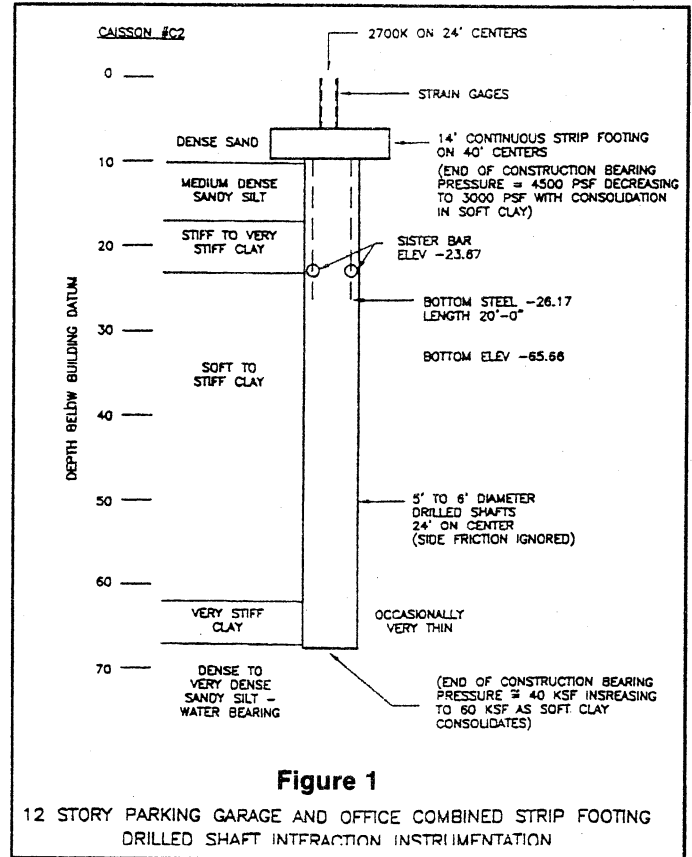


Figure 1

12 STORY PARKING GARAGE AND OFFICE COMBINED STRIP FOOTING DRILLED SHAFT INTERACTION INSTRUMENTATION

is approximately 1/2-inch to 5/8-inch. This would indicate that the deep bearing soils are stiffer than anticipated and that long-term settlements will also be less than anticipated.

The project developer is the Yusuf Partnership, with Kolbjorn Saether as structural engineer. Gerald Slawin of Gordon Levin Slawin, is the architect, and Gelick Associates is the associate architect. Walsh Construction Company is the contractor.

Clyde N. Baker, Jr., P.E., S.E.
Tony A. Kiefer, P.E.
STS Consultants, Ltd.

Congratulations To:

John L. Carrato for his appointment as Assistant Division Manager at Alfred Benesch & Company.

Richard Hill for his appointment as Division Manager of the Kenosha, Wisconsin, Division of Alfred Benesch & Company.

John M. Salman for his appointment as Project Manager of the Lansing, Michigan, Division of Alfred Benesch & Company.

Editor's Note: We welcome news from members about their appointments, promotions, research, publications and any other development activity we can proudly announce.



Left photo: Illinois Section President-Elect Allen Staron (left) with featured speaker Gayle Franzen, DuPage County Chairman, at the Suburban Dinner Meeting held April 25th at Sharko's Restaurant in Villa Park. **Right photo:** Elizabeth Vilt of Northwestern University receives Student Achievement Award from Brett Gitskin.



SECTION ACTIVITIES

Structural Division

The Illinois Section, Structural Division (Structural Branch, as it will be called in the future), would like to sincerely thank all of its members for another successful season. We hope that all of you that attended the dinner meetings enjoyed them and were able to gain additional insight about the topics discussed by the knowledgeable guest speakers.

The first dinner meeting for the 1995-1996 season will be held in September. Additional information will be given in the next newsletter. Topics for future dinner meetings are welcomed from members who feel they have a topic of interest to the structural community. Please contact any branch officer with suggestions. Structural Branch meetings are generally held one hour prior to the dinner meetings, and members are welcomed to attend. Members interested in helping with branch activities or in becoming an officer should contact any of the branch officers.

The Structural Branch would also like to thank all of its members who attended the 1995 Lecture Series entitled "Structural Consequences of Natural Disasters." More than 80 members attended this year's course. We hope to see you all at the 1997 Biennial Lecture Series. A special thanks goes to Rich Walther, chairperson of this year's Lecture Series. Proceeds from the Lecture Series are used to support the annual scholarship fund given to a structural engineering student. Additional copies of the 1995 Lecture Series Proceedings may be obtained for \$15. Please contact Barb Pries at (312) 263-1606 for information.

Transportation Division

On June 27, 1995, the Transportation Division presented its Lifetime Achievement Award to Mr. Richard J. Hocking, P.E., Vice President of Barton-Aschman Associates, Inc., in recognition of his numerous contributions to transportation engineering. The event was held at the Como Inn in Chicago. Congratulations to Mr. Hocking for his achievements in the field of transportation engineering.

Associate Member Forum

Come join us on July 22 for our annual canoe outing. We will vigorously float down the lazy Fox River in Wedron, IL. This will promise to be a relaxing day, so experienced canoeists need not apply. Contact Don Wittmer at (312) 930-9119 for more information. Hurry, space is limited.

Date: Saturday, July 22, 1995

Time: 9:30 a.m.

Place: Wedron, Illinois

Cost: \$17, includes canoe rental

RSVP: Don Wittmer at (312) 930-9119

Come join us at the beautiful Friendly Confines and root the Chicago Cubs onto victory. The game is on August 22 at 7:05 p.m. We have bleacher tickets this year, so call early to guarantee a ticket for yourself. Contact Michael Trojian at (312) 565-0450 for further details.

Date: Tuesday, Aug. 22, 1995

Time: 7:05 p.m.

Place: Wrigley Field, Chicago

RSVP: Michael Trojian at (312) 565-0450

Management Division

The Administration Committee needs a few more dedicated ASCE members to help us plan our programs and events. Contact Bob Ivarson at (312) 454-1060 to volunteer. MGT interest areas are:

Education Dept. — Mentoring with *Engineers for Pre-College Education*; facilitating continuing education.

Professional Activities Dept. — Continuing education activities and ASCE awards participation.

Program Dept. — MGT Express and Fast Track Construction Lunches; co-sponsoring with other ASCE divisions and affiliates.

Construction Comm. — A program resource; topical seminars with affiliated organizations.

Energy Comm. — A power resource; helps facilitate the American Power Conference.

Marketing Dept. — Publication, communications and recruitment. Any ASCE member having suggestions or ideas on the above

interest areas, activities or events can contact Bob Camillone at (708) 349-2790 to contribute to our summer survey.

Six-Sentence Marketing Plan

STEP 5 — DEVELOP AN IDENTITY Identity is not a phony image. It is not what you want to be, but a statement of who you are and automatically honest. If you're not there yet, don't act as if you were. For example: we're a dependable firm that's been around for 30 years. We're not the first to try new things, but when you give us a job, you can be sure that it will be done right. Take it a step further and put it into a statement with vision.

Urban Planning & Development Division

A Project Funding Seminar is scheduled for November 1995. Anyone interested in contributing to this or other seminars relating to developmental issues should contact Vince Wroblewski at (708) 894-0007 ext. 242.

Division Meetings

Division meetings are held every third Thursday of the month.

Dates: July 20 and August 17

Time: 8:15 a.m.

Place: Denny's Restaurant
Oakbrook Terrace, Illinois

Engineering Quip

A very large wedding party elected to have formal pictures taken at the Sidestream Elevated Pool Aeration site on Harlem Avenue in Worth, Illinois. The entire group stood on the bridge over the lower pool while the photographer set up equipment and snapped shots with excellent results.

Upon receiving the bill, the couple thought that the price was very high. Included was an entry for aquatic expenses. When called, the photographer explained that aquatic expenses were life vests, scuba gear and water-proof cameras. "My price is lower than competition. I also inspect bridge foundations."

Bob Camillone